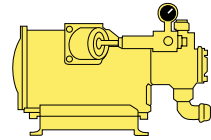


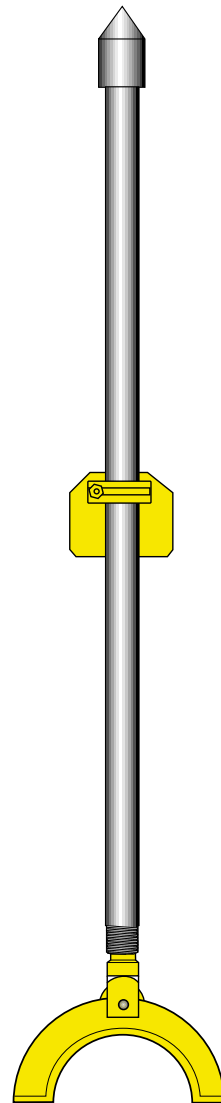
1. Flush pump	Flow	Pressure
TRIDO® 45 H . . . . .	45 l/min (12 US gpm)	45 bar (643 psi)
Hydraulic hose kit . . . . .		3715 8191-90
Water hose kit . . . . .		8492 0211-11



2. The right Tools for the Job	
Field kit with replacing instructions . . . . .	8314 0119-01
Back up kit . . . . .	3716 5916-90



3. Column		
Working range . . . . .	2 - 2.8 m	6.5 - 9.2 ft
. . . . .	2.6 - 3.4 m	8.5 - 11.2 ft



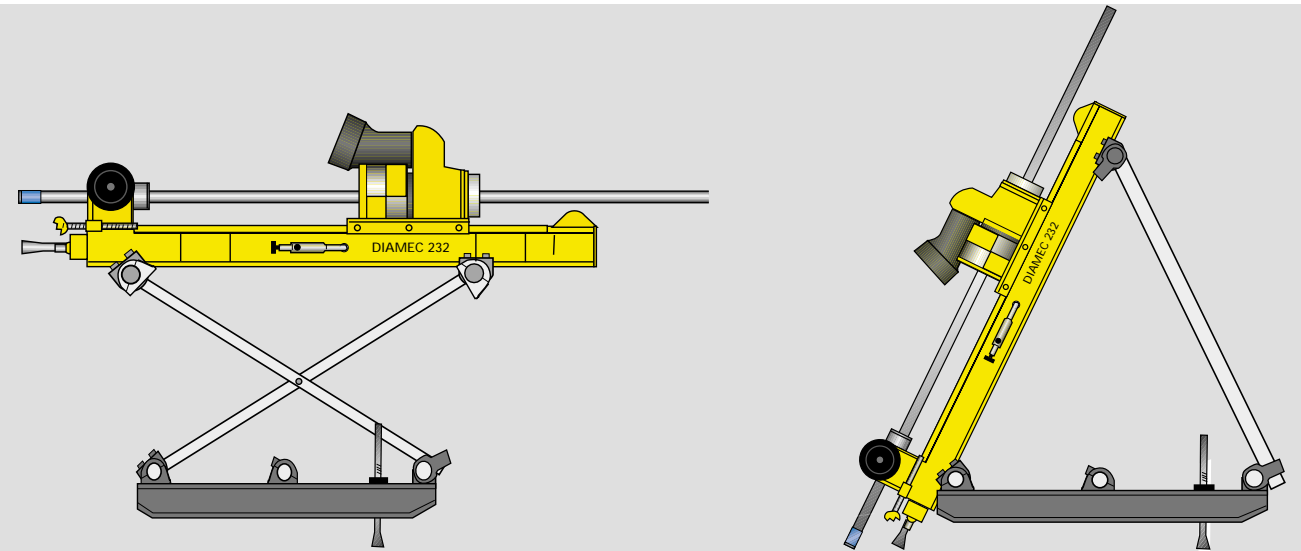
6991 1068 01

Atlas Copco reserves the right to make modifications without prior notice.

# Atlas Copco DIAMEC® 232



The smallest and most compact, all- hydraulic,mechanized core drill in the DIAMEC® range.



## Three Benefits to Improve your Drilling Effectiveness

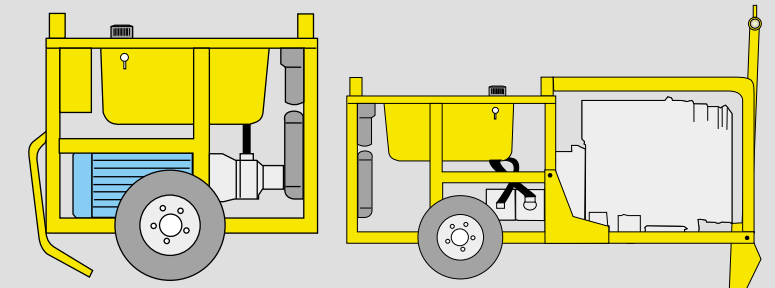
DIAMEC® 232 is an all-hydraulic machine, ideal for grout hole drilling or coring in narrow tunnels or galleries as well as in other cramped spaces underground. The core drill is equally efficient for surface drilling operations.

The compact design and light weight, makes the DIAMEC® 232 easy and fast to set-up for drilling. This in turn offers quicker moves between drill sites, without disturbing normal production routines in the mine, or grouting sequences in dam galleries.

The DIAMEC® 232 is also aluminium-free for use in coal mines. Combined with a special designed power unit, this machine can be used with HFC (water/glycol) flame-proof liquids in the hydraulic circuit, thereby complying with another statutory requirement in underground coal mines.

DIAMEC® 232 features the technically advanced design that the DIAMEC's are known for, namely:

- All hydraulic operation  
One man can perform all drilling and rod handling operations from the control panel
- Mechanized rod handling  
No tools are required
- Hinge mounted rod holder and rotation unit  
The drill head and rod holder can easily be swung away for off-hole clearance
- High production capacity
- Electric or diesel
- Variable hydraulic motor on rotation unit for stepless regulation of spindle speed keeping max. power output

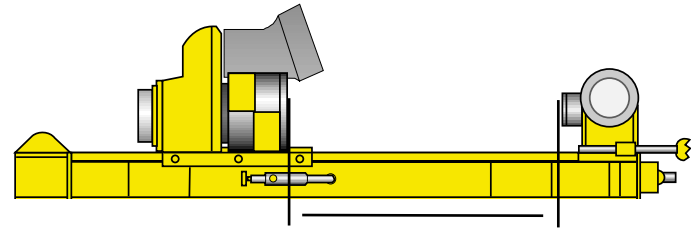


- Simple, robust power unit with a double hydraulic pump. Double pump permits independent regulation of feed and rotation. Equipped with a power take-off for driving a flush pump. Easy access for maintenance.

## DIAMEC® 232 SPECIFICATIONS

### Feed data

Feed length 1510 mm (59 in)  
 Feed retraction (A) ≈ 850 mm (33.5 in)



	A	
Feed force	20 kN	4 500 lbf
Retraction force	15 kN	3 400 lbf
Rod running speed		
out	0,8 m/s	2,6 ft/s
in	1,0 m/s	3,3 ft/s

Rod handling capacity, inclusive rod, pick-up and jointing/breaking 20 m/min

### Drilling Capacity Guide

Drill rod size	Approx. drilling depth	
	m	ft
Alu 33	300	1000
Alu 43, Alu AW	200	660
Compo 43	145	475
Steel 33	150	500
Steel 42	120	400
AK (AQ)	120	400
AGM	145	475

NB: The above capacity figures only serve as a guideline, and refer to vertical, downward drilling in homogeneous rock.

### Rotation unit with patented hydraulic chuck

Consists of a hydraulic motor, a gear box, a hollow spindle and an Atlas Copco patented hydraulic chuck.

Rotation is transmitted via the gear box to the chuck that, by hydraulic pressure, grips and rotates the drill rod.

The chuck and the rod holder are synchronized by an integral sequential logic system for safe and easy rod handling.

### Rotation characteristics

Speed range at max. output	550 - 2200 rev/min	
Spindle inner Ø	50.0 mm	1,97 in.
Chuck axial holding force	30 kN	6 600 lbf
Maximal torque	250 Nm	180 lbf.ft

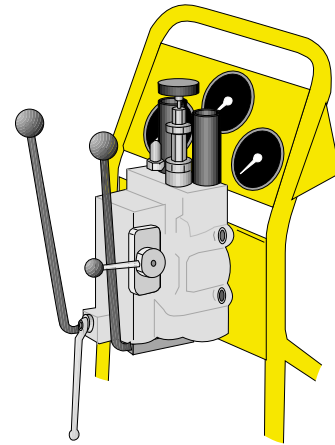
### A reliable easy-to-operate Rod holder

Rod holder of hydraulic mechanical type. Holding force is achieved by a spring set and is released by hydraulic pressure.

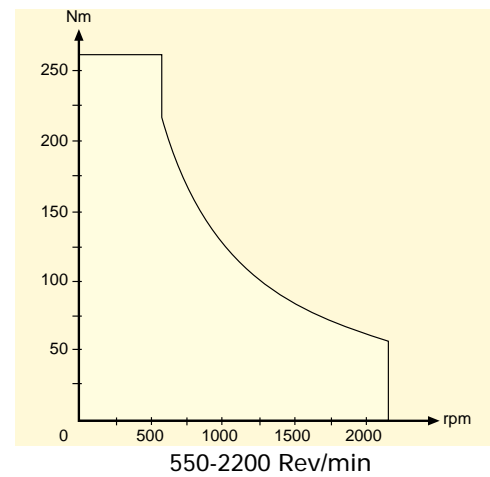
### Data

Maximal opening Ø	52 mm	2,05 in.
Axial Holding force	12 kN	2 700 lbf

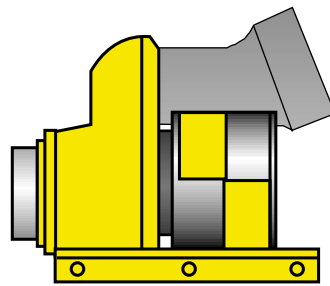
### Control panel



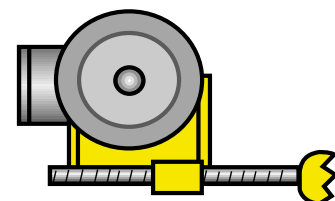
### Torque - Rev/min relationship



### Rotation unit



### Rod holder



## DIAMEC® 232 SPECIFICATIONS

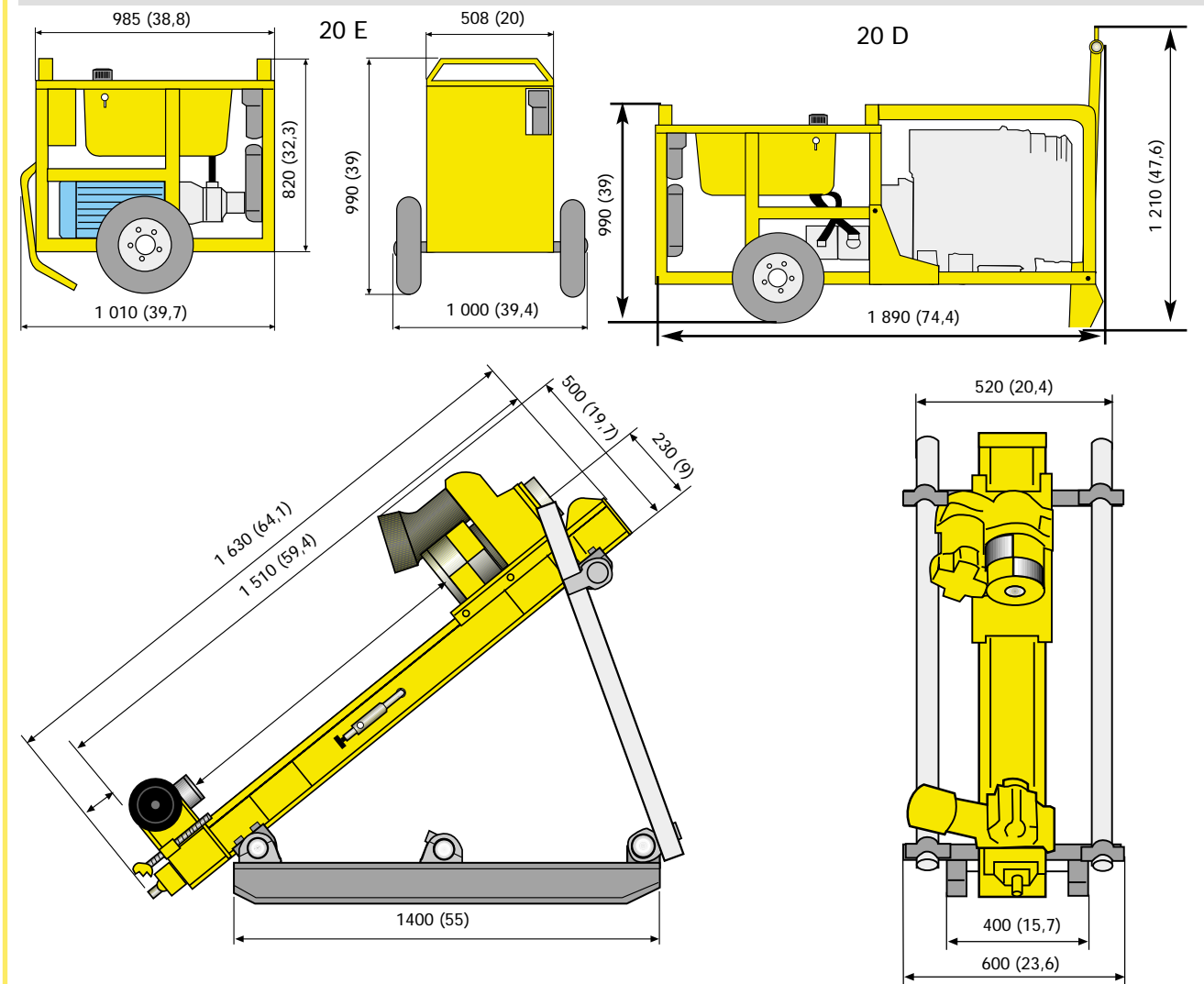
### Power units 20E and 20D with double hydraulic pump

The power unit has two variable-flow hydraulic pumps, mounted in tandem. They are integrated in the hydraulic system in such a way as to adjust their output to the power requirements of the drill unit in a most efficient way. Connections for an optional hydraulic driven flush pump are standard. Supplied complete with 70 litre oil tank, oil cooler and filters.

The electrical power unit 20E is powered by an asynchronous electric motor, and the diesel power unit 20D with a Deutz turbo diesel, type F3L 1011.

	Power unit 20E	Power unit 20D
Motor rating	15 kW (20 hp) at 1455 rpm	26 kW (34 hp) at 2500 rpm
Main pump		
flow	45 l/min (12 US gpm)	45 l/min (12 US gpm)
pressure	210 bar (3050 psi)	210 bar (3050 psi)
Service pump		
flow	3 l/min (0,8 US gpm)	3 l/min (0,8 US gpm)
pressure	210 bar (3050 psi)	210 bar (3050 psi)
Weights - Power units	230 kg (507 lb)	405 kg (893 lb)

### Measurements in mm (in.)



### Weights in kg (lb) - Drill unit

Drill unit**	254 kg (559 lb)
Control panel	79 kg (174 lb)

\*\* Incl. Control panel with hydraulic hoses